



protecting **you** and **your** home



The Personal & Environmental Protection Package

The Project

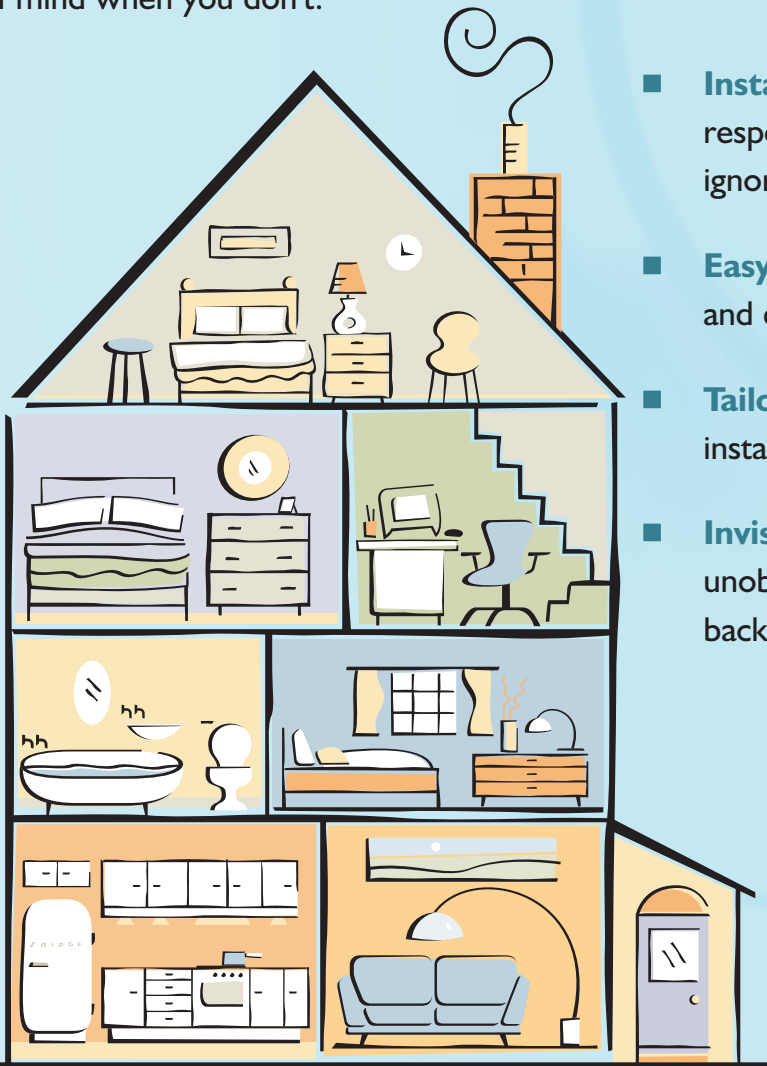
Active Living Technology encourages independent living. It is a range of new technologies that manage common risks at home through the combination of the Tunstall Lifeline unit and smart sensors.

The Personal & Environmental Protection Package is part of a 6-month pilot scheme in Kent to evaluate how effective Active Living Technology is in helping older and disabled people to stay living at home for longer, safe in the knowledge that help will be available should they need it, and providing reassurance to relatives, carers and other friends and neighbours.

Kent County Council believes the technology described in this leaflet will become an important part of the way we deliver our services, to promote the independence and quality of life of all the citizens of Kent.

The Personal & Environmental Protection Package

As well as supporting your health and wellbeing, the Personal & Environmental Protection Package provides extra reassurance to people worried about crime, intruders or bogus callers. Help can be summoned at the touch of a button 24 hours a day, 365 days a year. Whether it is a doctor, neighbour or a family member, the package makes sure you get the right kind of help just when you need it and peace of mind when you don't.



- **Instant response** - constant link to the response centre so your alarm will not be ignored and immediate action can be taken
- **Easy installation** - the system is wireless and quick to put in
- **Tailored solutions** - the sensors will be installed to suit your needs
- **Invisible protection** - the package is unobtrusive but always there in the background should you need it

The Personal & Environmental Protection Package contains:



Lifeline 400 home unit - works with your own telephone to raise an alarm at the response centre when your personal trigger or one of your sensors is activated. The centre will have all your details to hand and will make sure you get the right kind of help just when you need it.



Passive Infra Red sensors (PIR) - placed around your home to detect movement and will raise an alarm at the response centre if it senses an intruder. They protect your property while you are away and can be programmed to provide peace of mind while you are asleep.



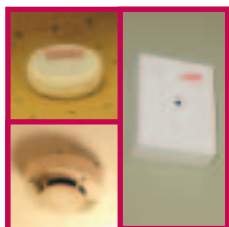
Amie personal trigger - enables you to raise an alarm from anywhere in the home at the touch of a button. You can also answer telephone calls from the comfort of your armchair simply by pressing the button.



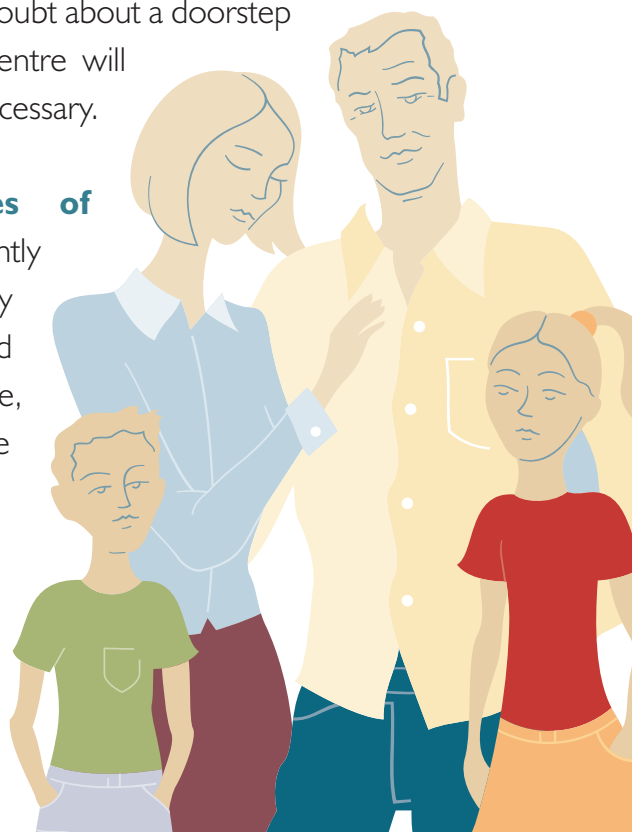
Arm/disarm trigger - allows you to set and unset the intruder alarm at the touch of a button, without the need for remembering a code.



Bogus caller button - a discreet button located near the front door for raising a call for help if in any doubt about a doorstep caller. Trained staff at the response centre will provide advice and send assistance if necessary.



Flood, smoke and extremes of temperature detectors - constantly monitor for any situations which may endanger you or your property, and raise an alarm at the response centre, as well as alerting you, to enable immediate action to be taken.



How is it installed?

There will be very little disruption for you. The heart of the system is the Lifeline home unit, which receives radio signals from the PIRs and triggers around your home and immediately raises the alert at the response centre. Your name and address and other relevant details will automatically be known and the right kind of help can be summoned straight away. The unit plugs into a normal plug socket and the telephone line, no other wiring is required. The home unit should never be unplugged.

Who do I call with any questions?

Press your pendant for immediate help or alternatively contact your Care Manager whose details are as follows:



Tunstall

www.tunstallgroup.com

Our policy of continual development means that product specification and appearance may change without notice. Tunstall Telecom Limited is a member of Tunstall Group Ltd. © 2004 Tunstall Group Ltd.

® TUNSTALL, LIFELINE and AMIE are registered trade marks of Tunstall Telecom Limited.

Tunstall Group Limited, Whitley Lodge, Whitley Bridge, Yorkshire DN14 0HR